



CIVIL ENGINEERS
LAND SURVEYORS
LAND PLANNERS

NOWAK & FRAUS ENGINEERS
46777 WOODWARD AVE.
PONTIAC, MI 48342-5032
TEL. (248) 332-7931
FAX. (248) 332-8257

SEAL



PROJECT
Village at Bloomfield

CLIENT
REDICO
One Towne Square,
Suite 1600
Southfield, MI 48076

Contact:
--
Phone: (248) 784-6486

PROJECT LOCATION
Part of the W. 1/2 of Section 5,
T. 2N., R. 10E., and part of the
NE 1/4 of Section 6, T. 2N., R.
10E., Bloomfield Township, The
City of Pontiac and Bloomfield
Township (conditionally
transferred to The City of
Pontiac) Oakland County,
Michigan

SHEET
District 2
Storm Sewer Profiles



Know what's below
Call before you dig.

DATE ISSUED / REVISED
05-12-17 Bids / Permits

DRAWN BY:

A. Wiseman

DESIGNED BY:

A. Wiseman

APPROVED BY:

P. Williams

DATE:

03-16-17

SCALE: 1" = 30'



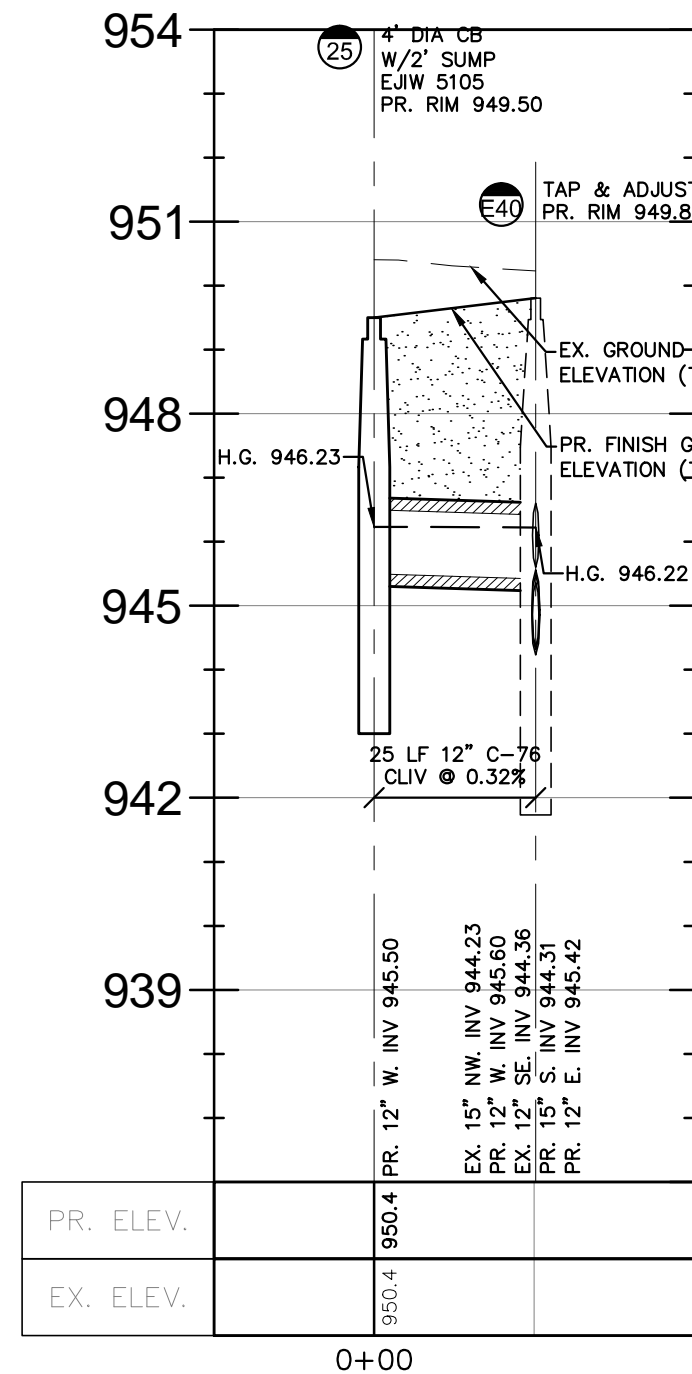
NFE JOB NO.

A116-21

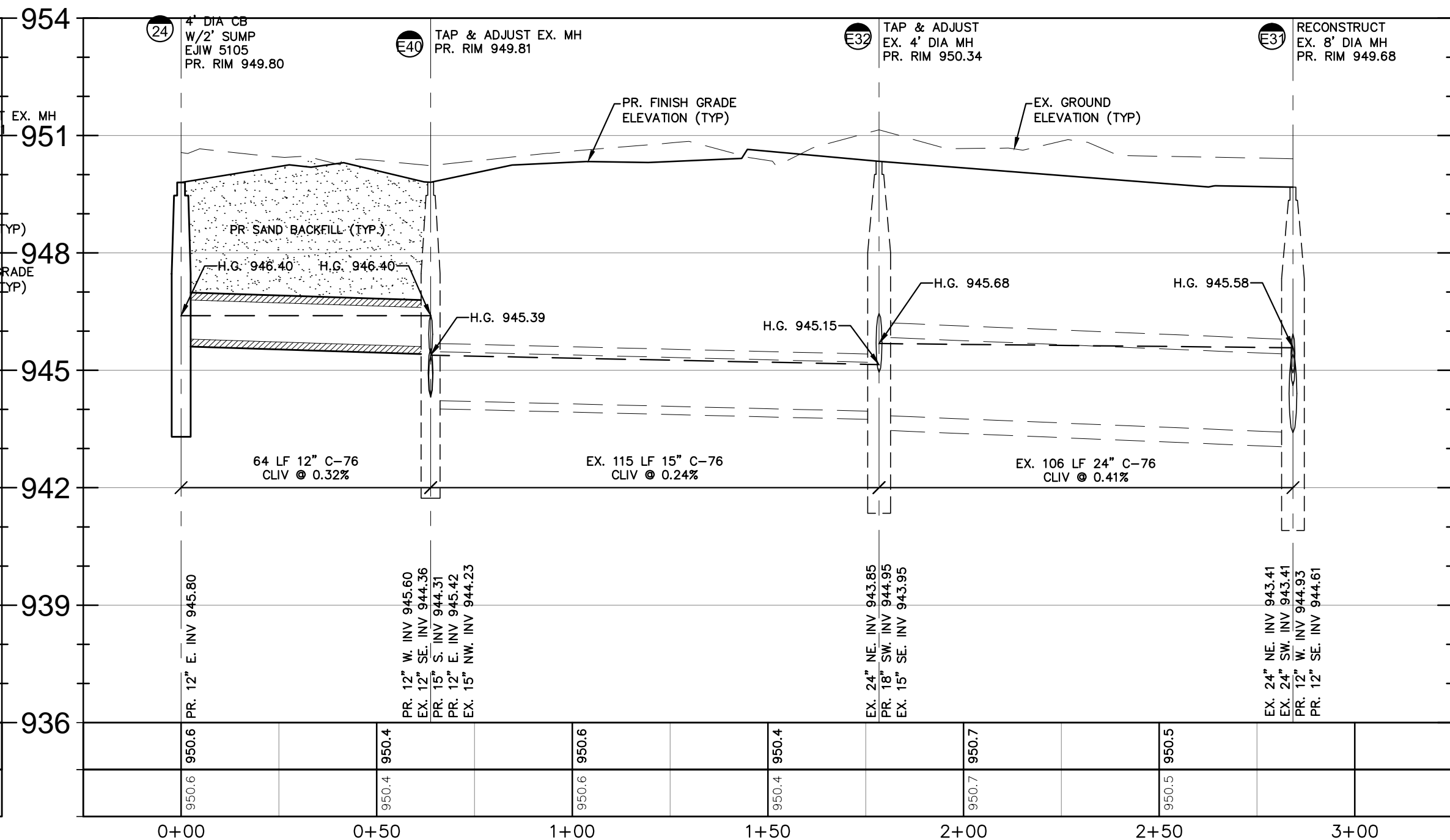
SHEET NO.

C-35

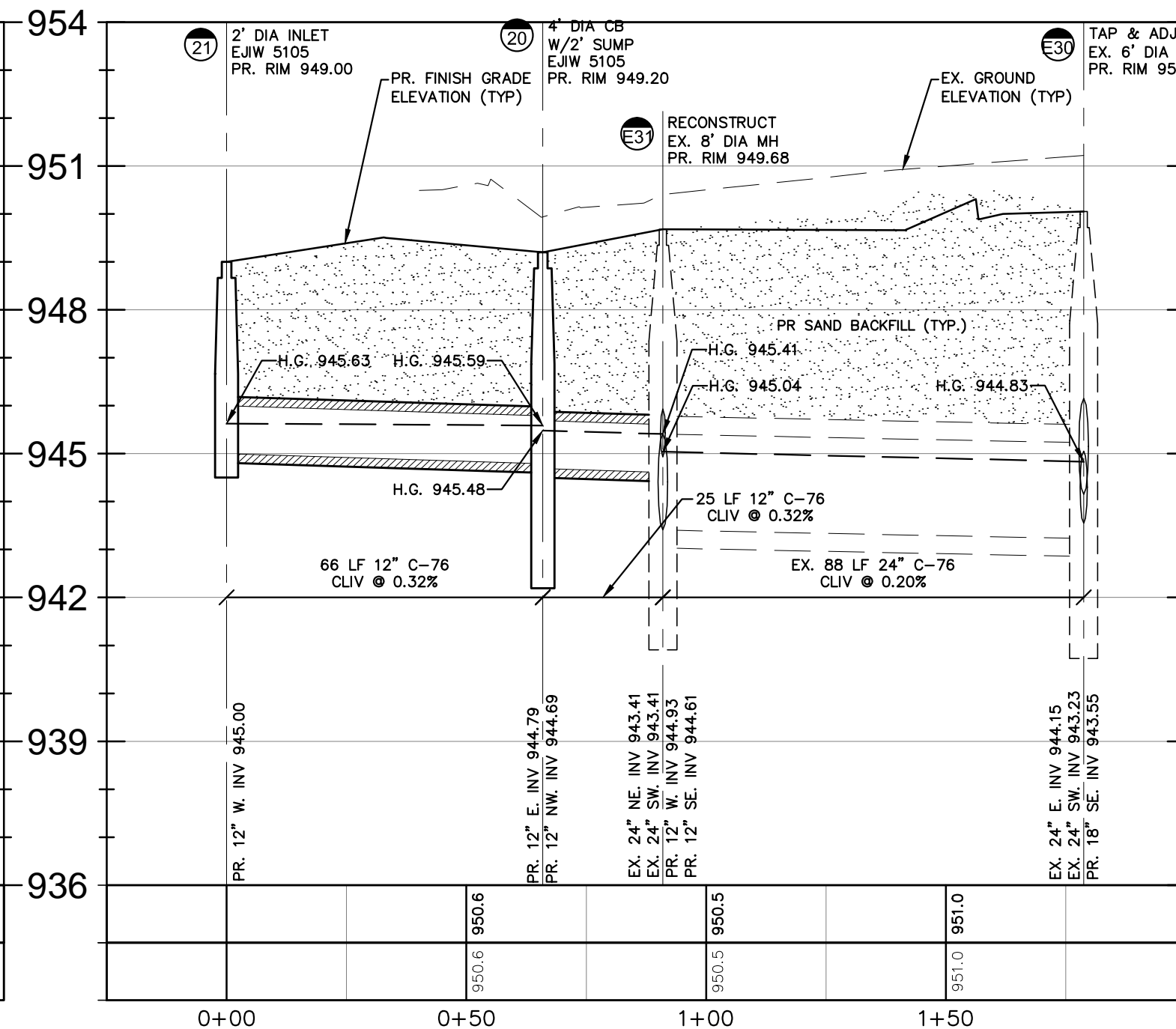
Profile 25-E40



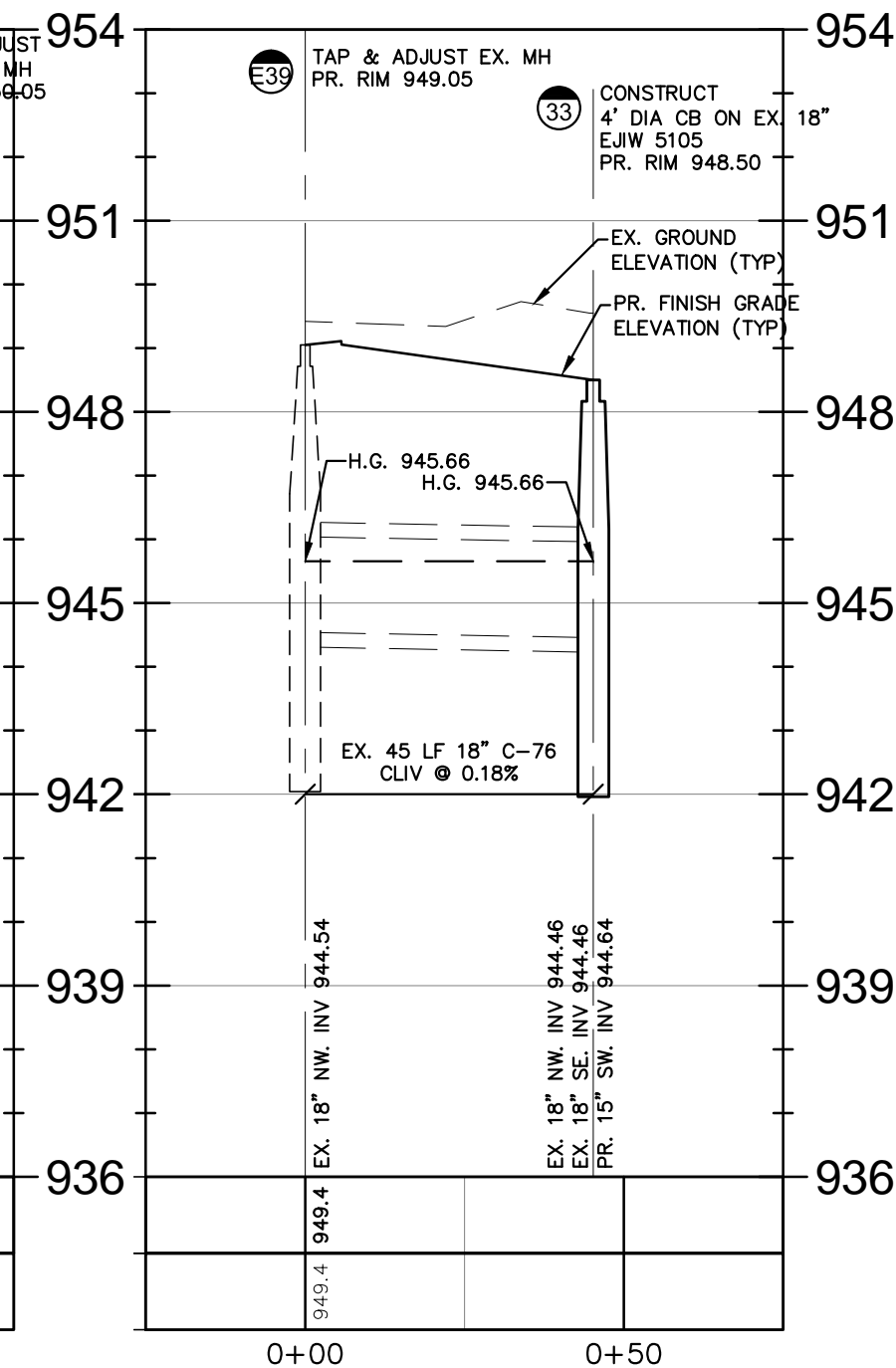
Profile 24-E31



Profile 21-E30



Profile E39-33



Storm Sewer Structure Schedule	
Structure Name	Structure Details
#25 4' DIA CB W/2' SUMP EJW 5105	PR. RIM 949.50 PR. 12" W. INV. 945.50
#E40 TAP & ADJUST EX. MH	PR. RIM 949.81 EX. 15' NW. INV. 944.23 PR. 12" W. INV. 945.60 EX. 12" SE. INV. 944.36 PR. 15' S. INV. 944.31 PR. 12" E. INV. 945.42

Storm Sewer Structure Schedule	
Structure Name	Structure Details
#24 4' DIA CB W/2' SUMP EJW 5105	PR. RIM 949.80 PR. 12" E. INV. 945.80
#E31 RECONSTRUCT EX. 8' DIA MH	PR. RIM 949.68 EX. 24" NE. INV. 943.41 EX. 24" SW. INV. 943.41 PR. 12" W. INV. 944.93 PR. 12" SE. INV. 944.61
#E32 TAP & ADJUST EX. 4' DIA MH	PR. RIM 950.34 EX. 24" NE. INV. 943.85 PR. 18" SW. INV. 944.95 EX. 15' SE. INV. 943.95
#E40 TAP & ADJUST EX. MH	PR. RIM 949.81 EX. 15' NW. INV. 944.23 PR. 12" W. INV. 945.60 EX. 12" SE. INV. 944.36 PR. 15' S. INV. 944.31 PR. 12" E. INV. 945.42

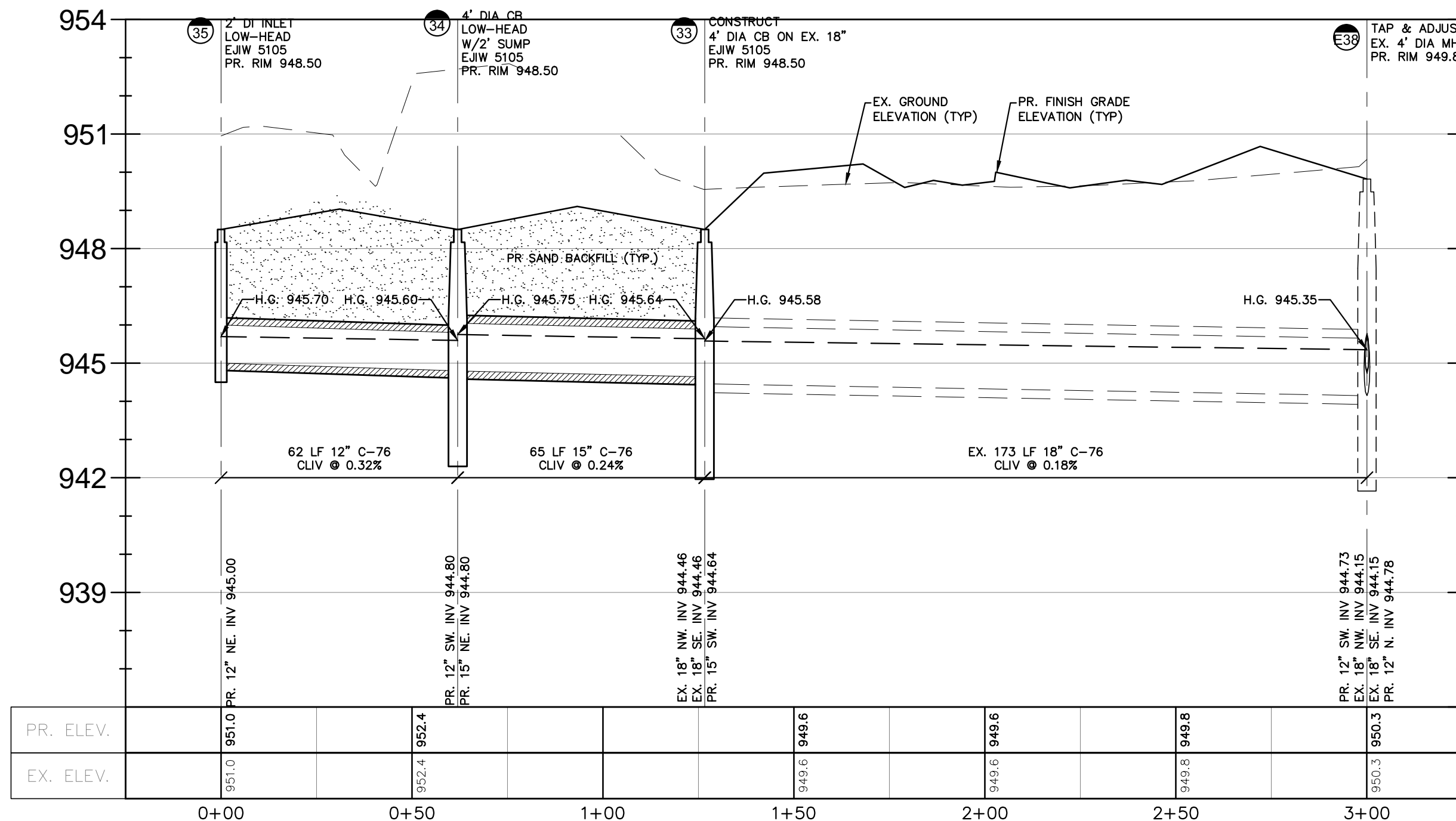
Storm Sewer Structure Schedule	
Structure Name	Structure Details
#22 4' DIA CB W/2' SUMP EJW 5105	PR. RIM 949.30 PR. 12" E. INV. 945.09 PR. 12" W. INV. 945.09
#23 2' DIA INLET EJW 5105	PR. RIM 949.30 PR. 12" E. INV. 945.30
#E30 TAP & ADJUST EX. 6' DIA MH	PR. RIM 950.05 PR. 24" E. INV. 944.15 EX. 24" SW. INV. 943.23 EX. 18" SE. INV. 943.55
#E31 RECONSTRUCT EX. 8' DIA MH	PR. RIM 949.68 EX. 24" NE. INV. 943.41 EX. 24" SW. INV. 943.41 PR. 12" W. INV. 944.93 PR. 12" SE. INV. 944.61

Storm Sewer Structure Schedule	
Structure Name	Structure Details
#33 CONSTRUCT 4' DIA CB ON EX. 18" EJW 5105	PR. RIM 948.50 EX. 18" NW. INV. 944.46 EX. 18" SE. INV. 944.46 PR. 15" SW. INV. 944.64
#E39 TAP & ADJUST EX. MH	PR. RIM 949.05 EX. 18" NW. INV. 944.54

Storm Sewer Structure Schedule	
Structure Name	Structure Details
#33 CONSTRUCT 4' DIA CB ON EX. 18" EJW 5105	PR. RIM 948.50 EX. 18" NW. INV. 944.46 EX. 18" SE. INV. 944.46 PR. 15" SW. INV. 944.64
#34 4' DIA CB LOW-HEAD W/2' SUMP EJW 5105	PR. RIM 948.50 PR. 15" NE. INV. 944.80 PR. 12" SW. INV. 944.80
#35 2' DI INLET LOW-HEAD EJW 5105	PR. RIM 948.50 PR. 12" NE. INV. 945.00
#E38 TAP & ADJUST EX. 4' DIA MH	PR. RIM 949.82 EX. 18" NW. INV. 944.15 PR. 12" SW. INV. 944.73 EX. 18" SE. INV. 944.15 PR. 12" N. INV. 944.78

Storm Sewer Structure Schedule	
Structure Name	Structure Details
#32 4' DIA MH W/2' SUMP	PR. RIM 949.00 PR. 12" NE. INV. 945.00
#E38 TAP & ADJUST EX. 4' DIA MH	PR. RIM 949.82 EX. 18" NW. INV. 944.15 PR. 12" SW. INV. 944.73 EX. 18" SE. INV. 944.15 PR. 12" N. INV. 944.78

Profile 35-E38



Profile 32-E38

